

Customer :

customer

Customer part :

customer part

Comment :

Comment

S1=3.77

S2=5.44

Tmax=465

Tp S2=504.0

PI=0.41

HI=89

Sample =1761.80

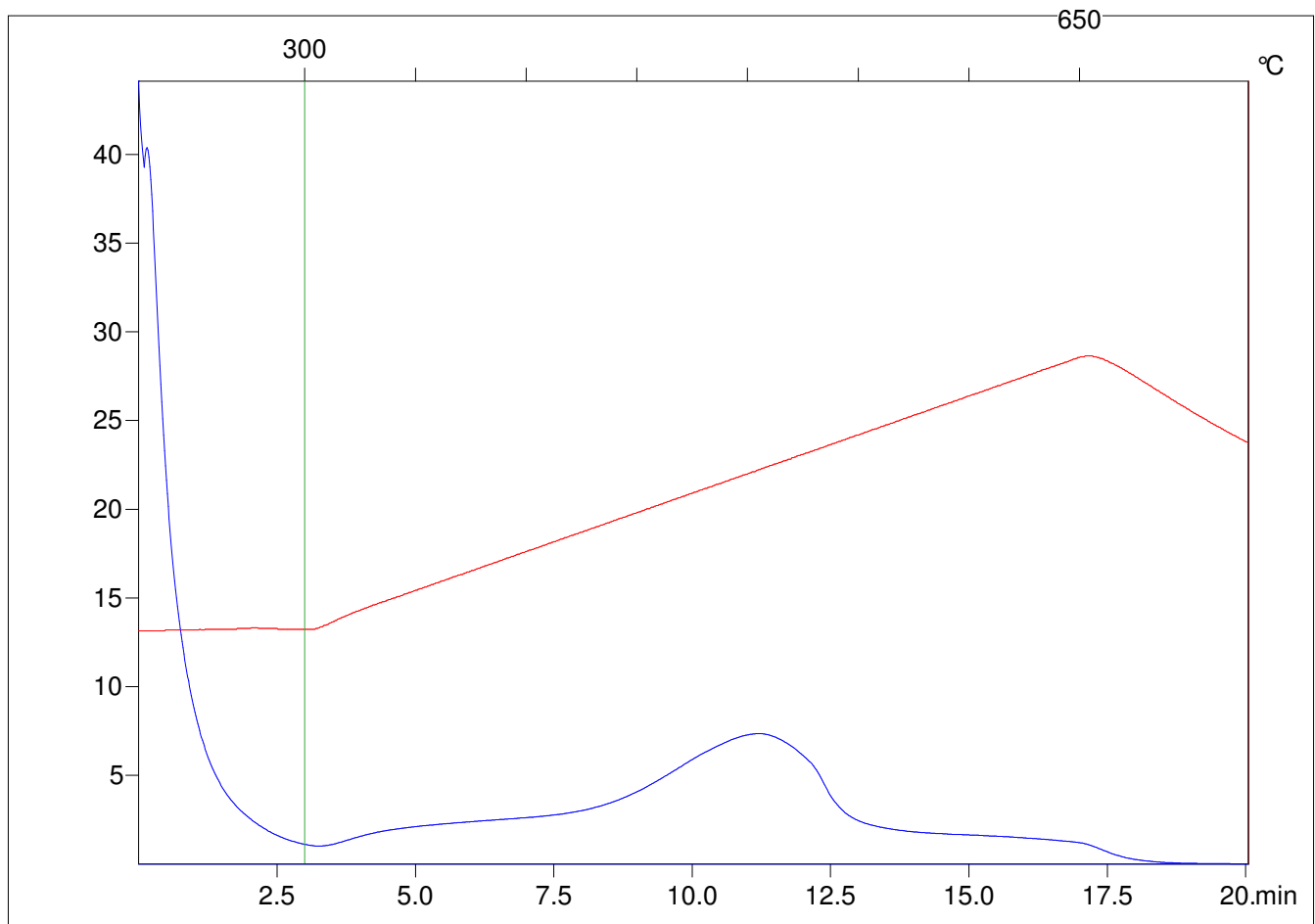
Method =Bulk Rock

Cycle=Basic

KFID(10*9)=1444

Qty =70.5

TOC=6.09



C:\VINC\PK3_1792\PK025.R00 : FID pyrolysis graphic

State

Pyro Status

Oxi Status